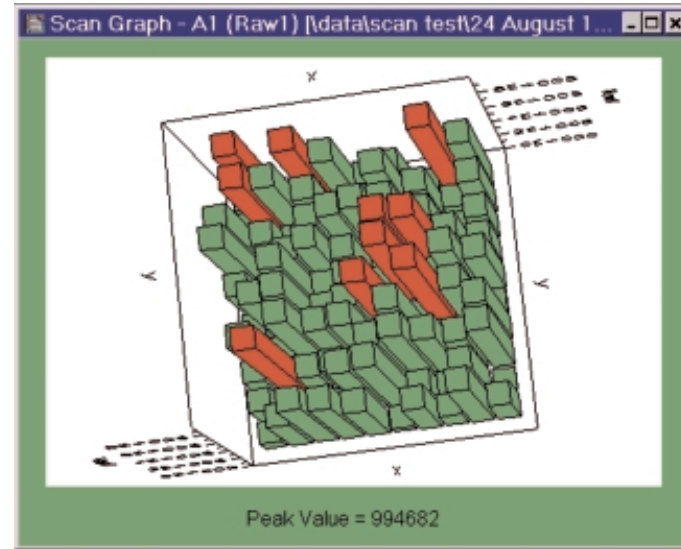
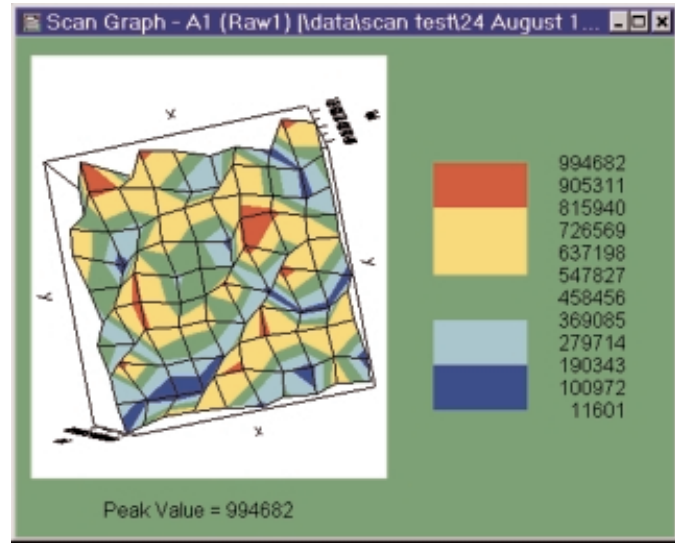


Scanning of the well area

View scan data in a many different projections, including bar, 3D and colour coded aerial views.



	1	2	3	4	5	6	7	8	9	10	11	12
A												
B												
C												
D												
E												
F												
G												
H												

Wallac WorkOut software provides a flexible and easy to use tool for wide range of applications from standard curve fitting to complicated kinetics readings. It is 32-bit application for Windows NT/95/98, and includes powerful features such as context sensitive help, multiple plate support and wide range of graphics options.

Protocol/Results separation

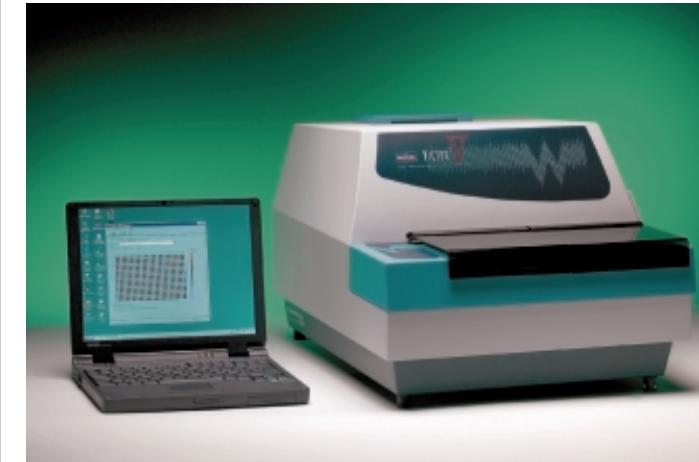
WorkOut splits assay use between design and results. This approach allows an assay to be designed and re-used many times to run routine tests and provide a consistent reporting method. WorkOut also provides a facility for changing the protocol file after readings have been made, if required.

Assay Master

Guides the user through the maze of protocol design.

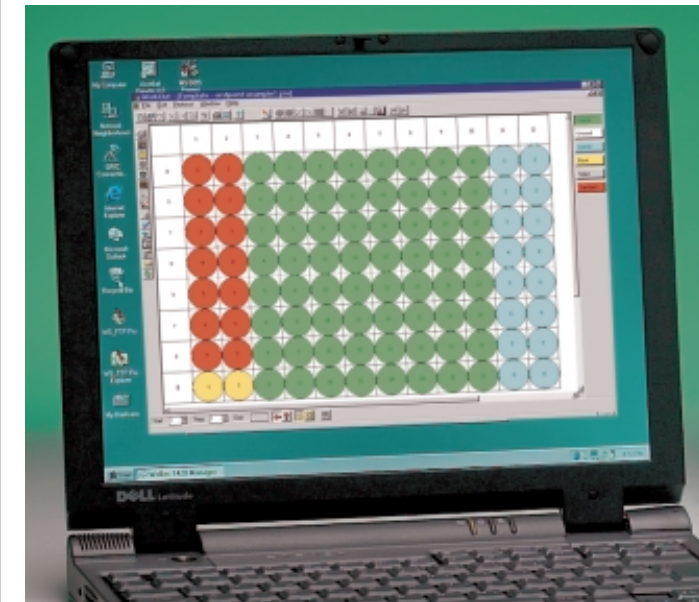
Variable Microplate Dimensions

WorkOut can be used with any microplate dimensions.



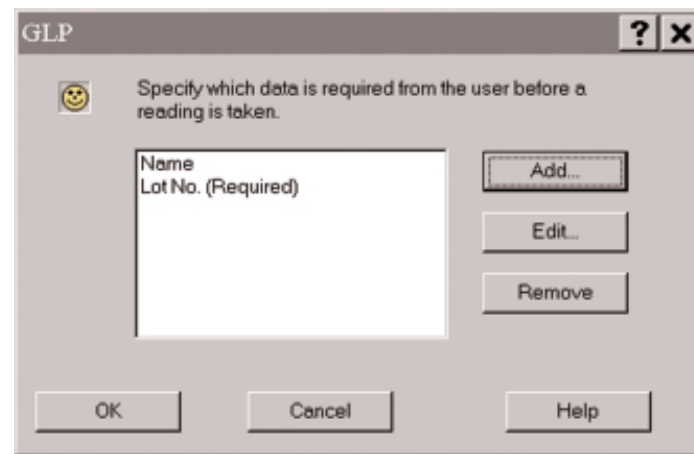
Flexible Template Configuration

Use the mouse to quickly design any possible template layout with replicates and in any fill direction.



Good Laboratory Practice (GLP)

Easily create data entry screen to appear before a protocol run to gather assay specific information. This data can be included in the report.



Automatic Flagging

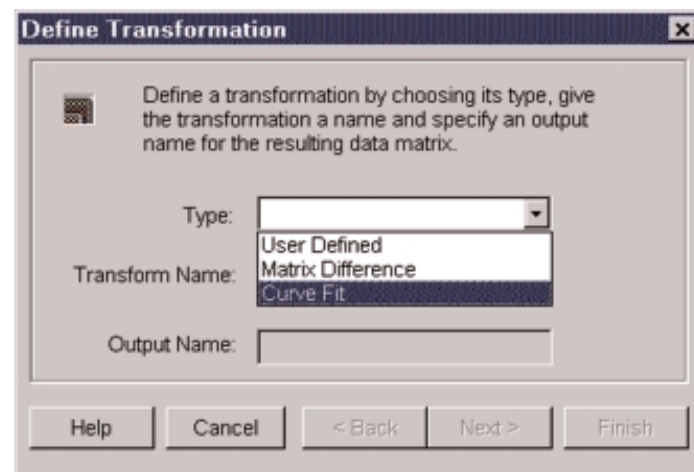
WorkOut can automatically flag wells, which satisfy expression based conditions or automatically flag the well that is the furthest from the mean for all groups with a percentage CV greater than a specified value.

Powerful Transformations

Create data transformations using standard mathematical grammar on raw or calculated data, using references to wells or defined groups.

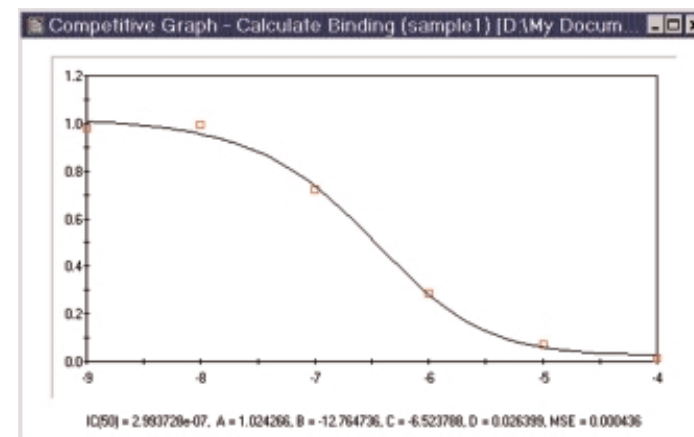
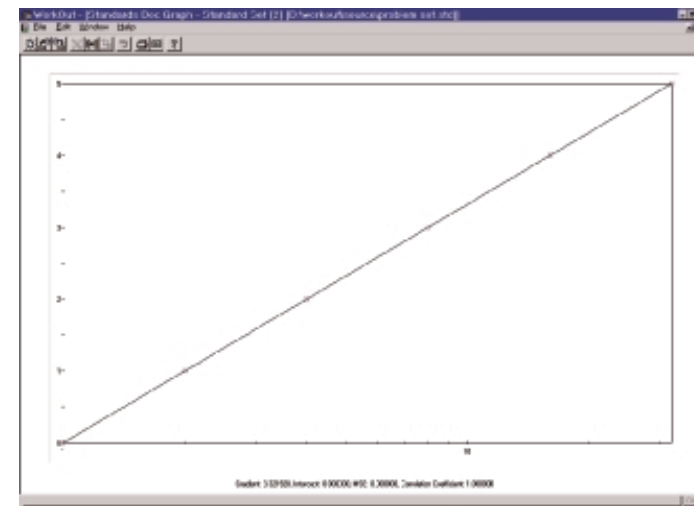
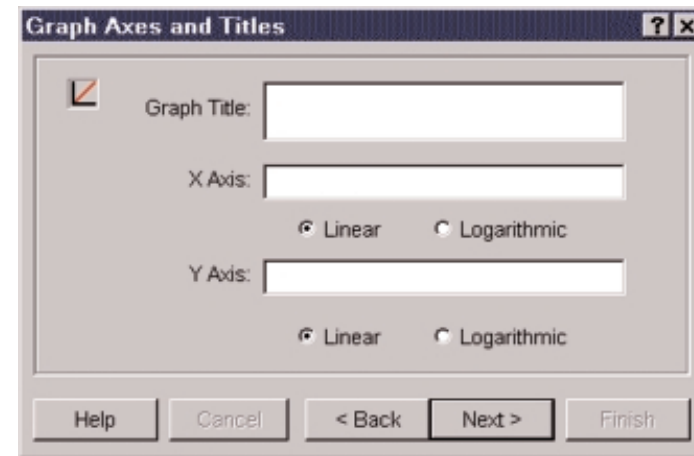
Transformation Wizards

Quickly create transformations for common tasks: blank correction, curve fit, matrix difference, kinetic difference and competitive bindings.



Curve Fits

- Linear Regression on replicate points, with a specified validation correlation coefficient
- Point to Point
- Cubic Spline
- Polynomial Regression
- Four and Five Parameter Fit for sigmoidal plots



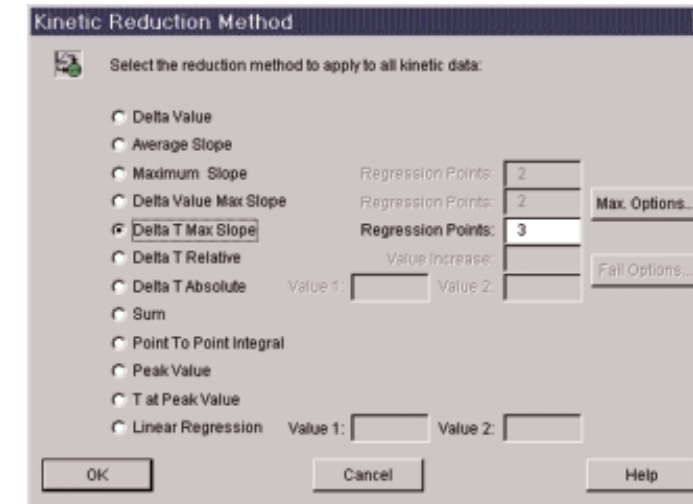
Flexible Graph Axes and Titles

Logarithmic or Linear x and/or y axes.

Multiple standards on one plate
Competitive binding/inhibition concentrations
Twelve kinetic reduction methods available

Kinetic Fail options

Specify what happens if a reduction method fails.



Flexible Validation Specification

Specify validations for raw or calculated data using standard mathematical expressions on defined groups or wells, including Boolean operators and statistical operations.

Flexible Cut-Off Specification

Specify Cut-Offs as expressions for raw or calculated matrices using standard mathematical expressions on defined groups or wells, including Boolean operators and statistical operations.

Flexible Reporting specification

Choose which data to include in the report and in which order. Edit report headers and footers. The report can include a table of results (by group), a matrix of results (by well), fitted graphs, any fixed text, readings notes, validation results, calculation log, automatic flagging results, list of flagged wells and 3D graphs.

Editing of the protocol after readings have been taken

Make modifications to a protocol after readings have been made (user privilege dependent) and results can be recalculated.

3D Graphs

WorkOut can plot 3D graphs of raw or calculated data. Views can be zoomed, rotated and shifted. 3D graphs can be used to easily identify and flag anomalies.

Manually Flagging Wells

Easily flag single wells or points or groups from various views, including standards graph. All flagged items are logged and can be included in the report.

Calculation Log

Details calculations, explains errors and tracks flagged items. The log can be included in the report and saved to a file.

Automatic Printing and Exports

WorkOut automatically prints the report or launches other applications with WorkOut data after readings have been made.

Archived Standards Data

Extract standards data from protocol runs for use in transformations of future protocols. Create or edit archived standards data visually and test unknowns.

User names and passwords

Use in conjunction with LabLock to restrict user access and rights. LabLock can also be used to log user activity.

Multiple plate support

For use with assays that use multiple microplates

	1	2	3	4	5	6	7	8	9	10	11	12
A	16.838	5.758	10.113	17.575	31.051	5.627	23.028	7.479	16.212	4.006	2.743	12.767
B	9.884	12.860	32.224	17.543	25.029	21.383	25.137	25.566	28.966	4.978	28.495	38.311
C	11.367	30.854	17.811	13.145	19.812	25.736	38.524	28.925	28.714	22.102	24.851	19.067
D	12.754	11.853	6.561	27.896	13.628	15.188	32.085	4.143	6.967	31.486	24.165	13.403
E	25.562	24.834	31.353	8.928	18.444	24.881	7.962	19.318	1.422	11.327	18.467	1.945
F	14.479	29.983	18.751	3.884	18.678	8.258	16.248	7.757	15.629	13.386	28.606	13.990
G	11.738	12.516	1.414	5.262	17.116	22.825	3.881	13.134	25.341	8.822	11.231	7.536
H	9.760	9.979	29.871	1.381	21.336	13.861	22.168	24.085	38.729	7.644	27.475	31.693